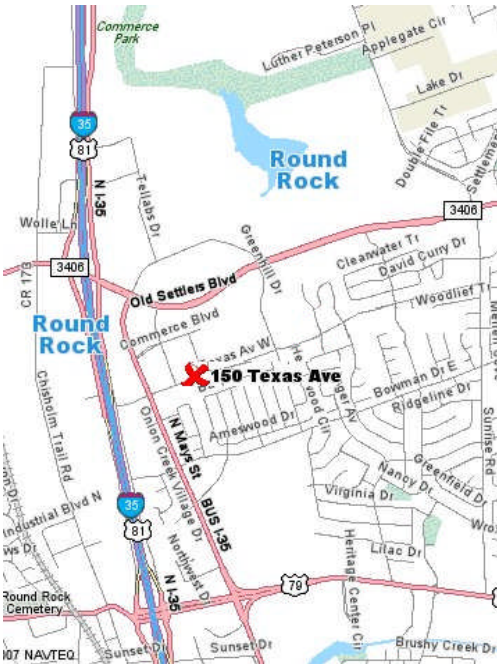


FOR LEASE



150 Texas Ave. Round Rock | Texas | 78664

- Conveniently located two blocks east of IH-35, on the northeast side of Round Rock.
- Tiltwall property with concrete parking.
- Suite 102: 2,308 SF.
- Built out with reception area; rest of space is open area.
- Approx. 1,320 SF at the front of the space is HVAC production space.
- 2 Grade level overhead doors.
- Rate: \$8.16 PSF + \$1.85 PSF NNN (approx. \$1,700.00 per month).

1000 N. IH-35, Suite A | Round Rock | TX | 78681

Phone 512.255.3000

www.DonQuick.com

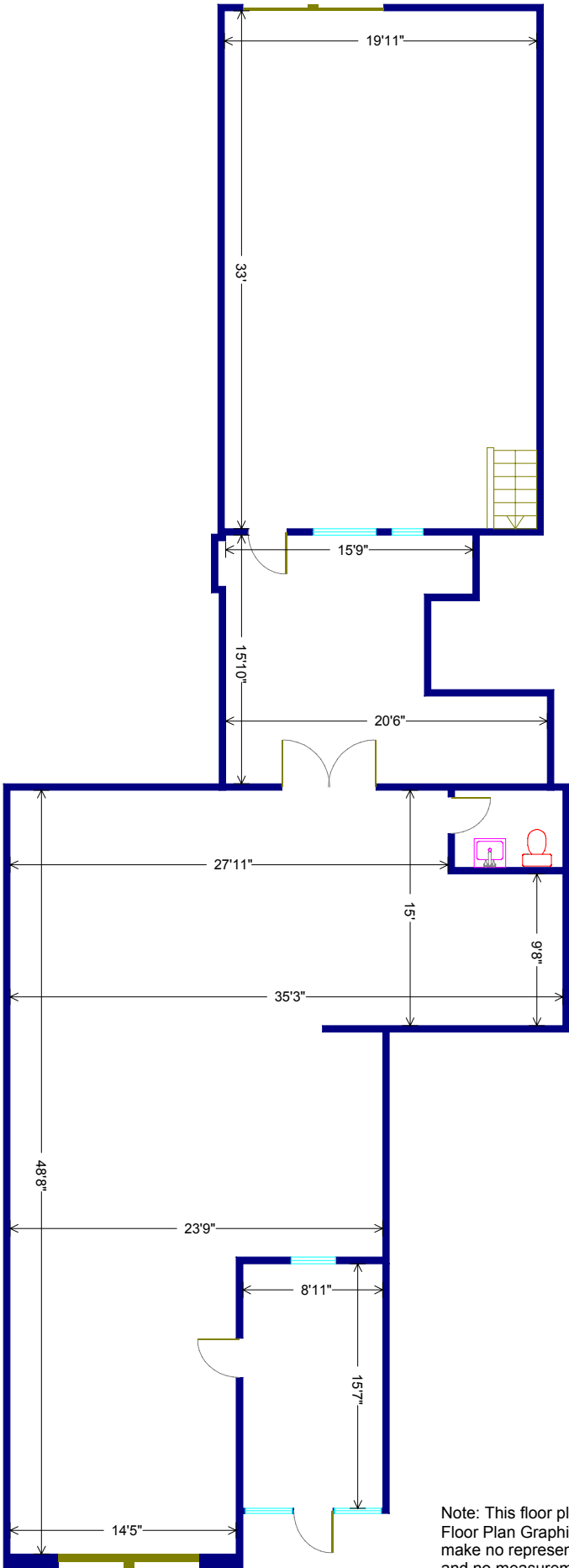
The material contained in this memorandum is based in part upon information furnished to Don Quick & Associates, Inc. by sources deemed to be reliable. The information is believed to be accurate in all material respects, but no representation or warranty, expressed or implied, as to list accuracy or completeness is made by any party. Nothing contained herein should be relied upon as a promise or representation as to the future. Recipients should conduct their own investigation and analysis of the information described herein.

**DON
QUICK**
& associates, inc.

Contact
Darren Quick, Realtor®
512.255.3000
Darren@donquick.com

150 Texas Avenue, Suite #102

Approximately 2,308 SF



Note: This floor plan is artistic rendering only. All dimensions are approximate. Floor Plan Graphics and Don Quick & Associates make no representation or warranty as to this rendering accuracy and no measurements or dimensions should be relied upon without independent verification.

Marketed by Don Quick & Associates, 512.255.3000, DonQuick.com
Floor plan created by Floor Plan Graphics, 512.454.0383, FloorPlanGraphics.com