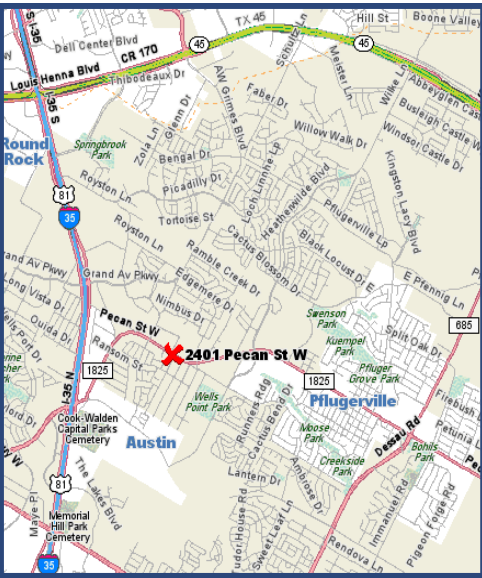


FOR LEASE



Park Place



2401 Pecan Street
Pflugerville | Texas | 78660

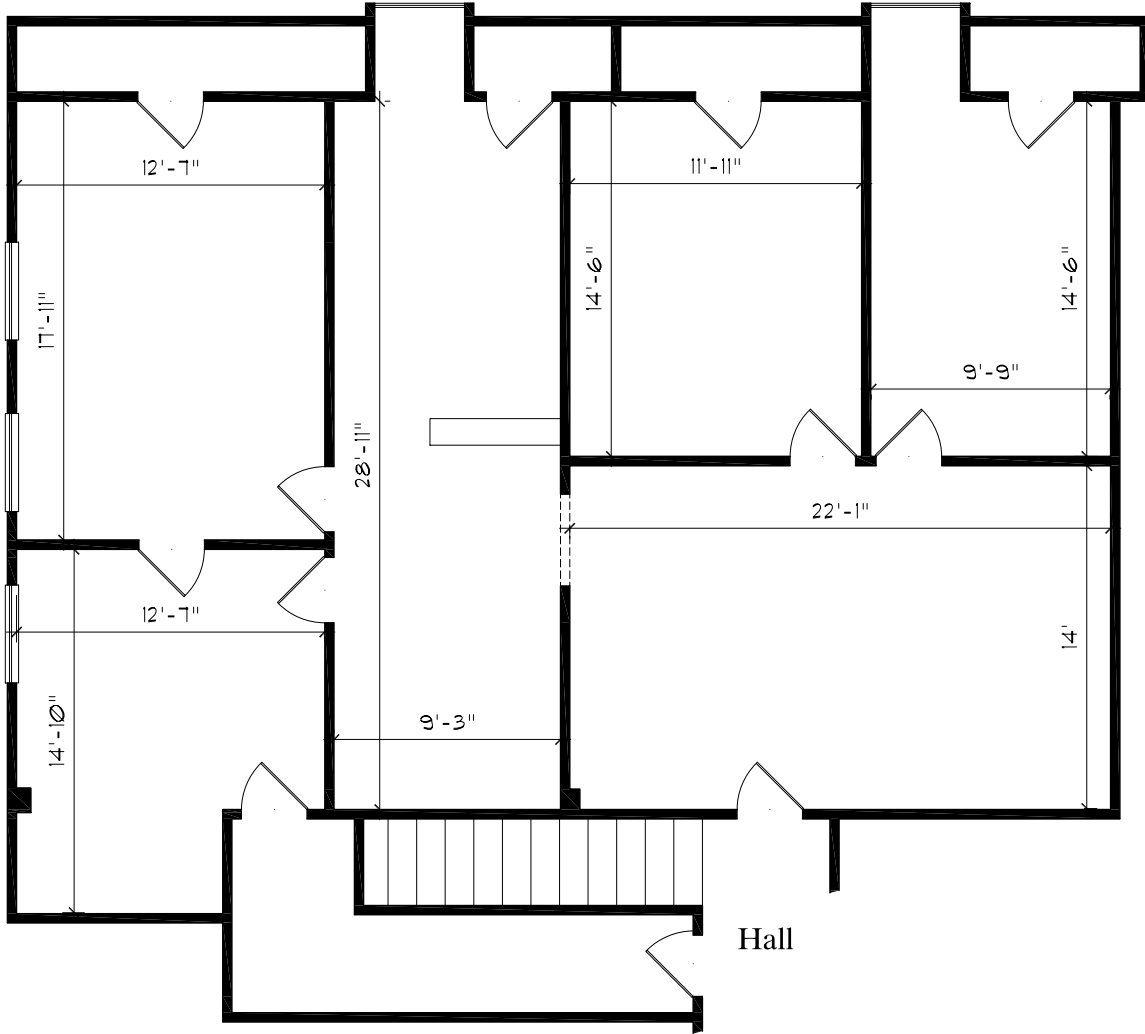
- Located one mile east of IH 35 on FM 1825 (Pecan Street) in Pflugerville.
- 14,734 SF office building:
Suite 200: 1,843 SF.
Suite 203: 778 SF.
- Specific Use: Medical Office.
- Ample parking for tenants and visitors.
- 24 hour access.
- Rate: \$1.00 PSF + NNN.
- Tenant pays pro-rata share of taxes, insurance, and CAM.

**DON
QUICK**
& associates, inc.

Contact
Brent Campbell, Realtor®
Matt Fain, Realtor®
512.255.3000
Brent@donquick.com
Matt@donquick.com

1000 N. IH-35, Suite A | Round Rock | TX | 78681
Phone 512.255.3000 www.DonQuick.com

The material contained in this memorandum is based in part upon information furnished to Don Quick & Associates, Inc. by sources deemed to be reliable. The information is believed to be accurate in all material respects, but no representation or warranty, expressed or implied, as to list accuracy or completeness is made by any party. Nothing contained herein should be relied upon as a promise or representation as to the future. Recipients should conduct their own investigation and analysis of the information described herein.



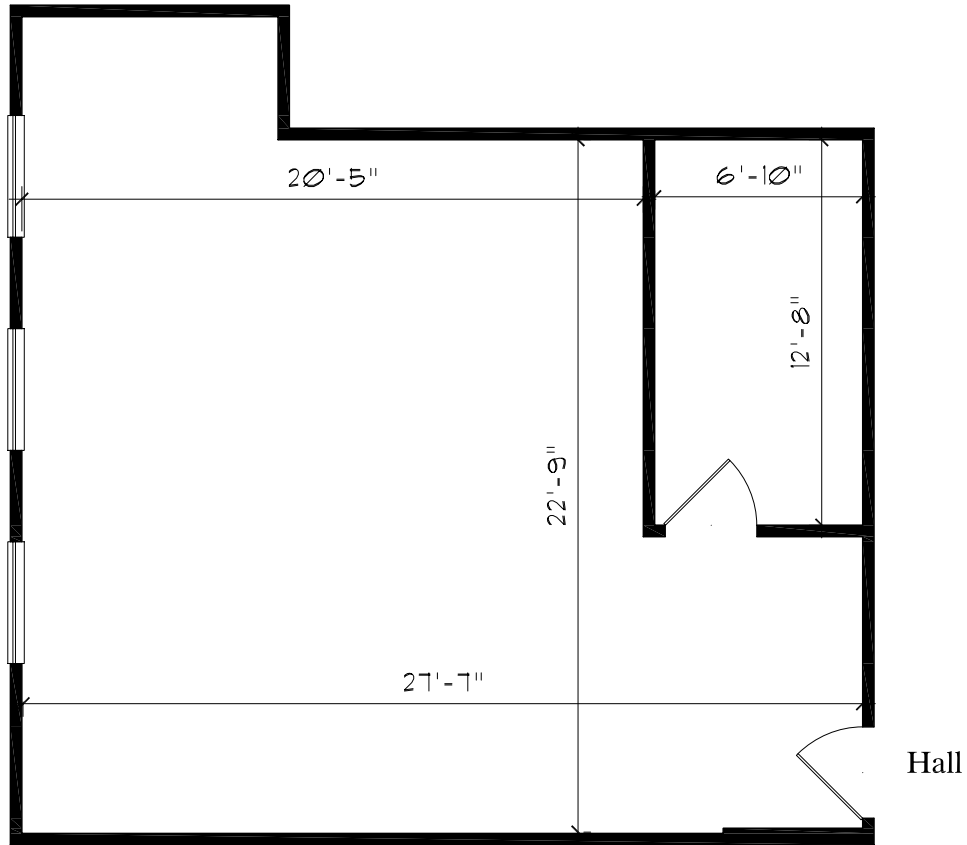
Suite 200

1633 USF
1843 RSF

Park Place

2401 Pecan Street
Pflugerville, TX

Note: dimensions and details are approximates only



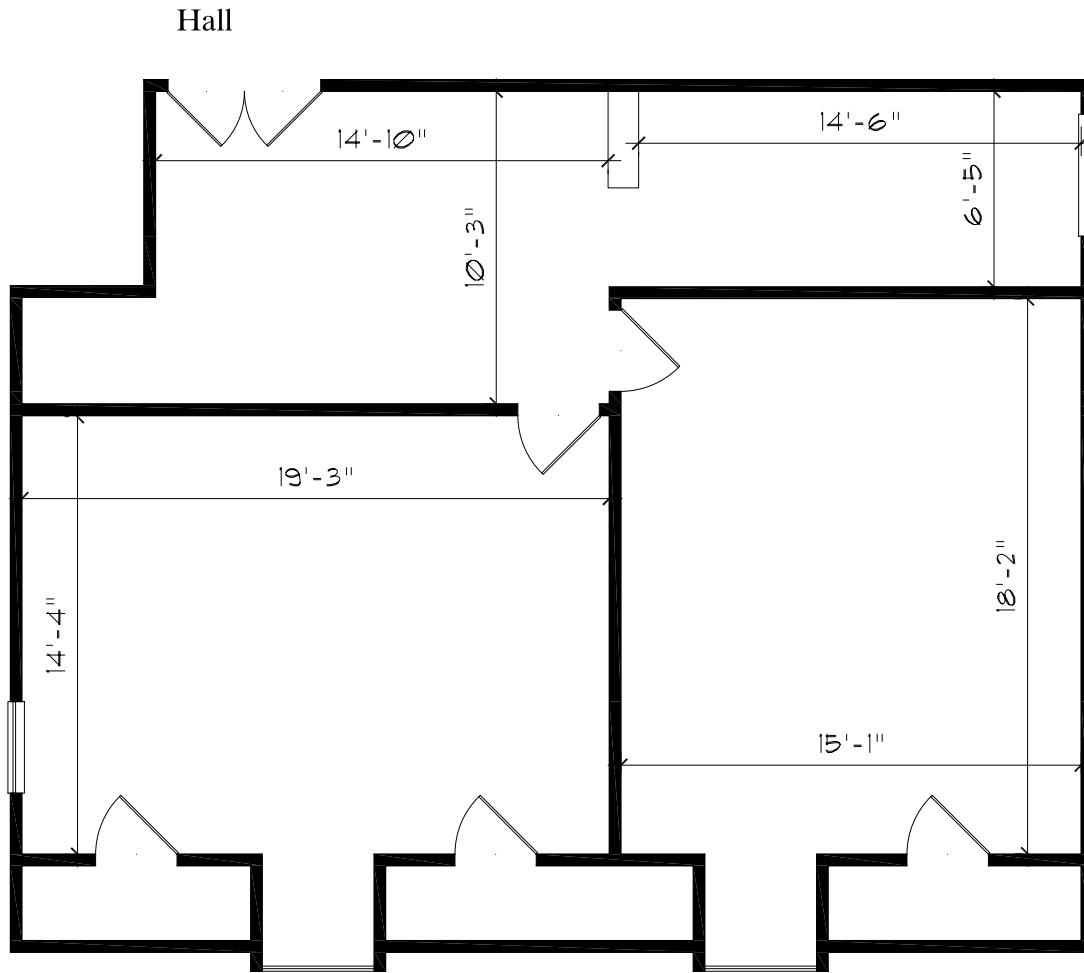
Suite 203

689 USF
778 RSF

Park Place

2401 Pecan Street
Pflugerville, TX

Note: dimensions and details are approximates only



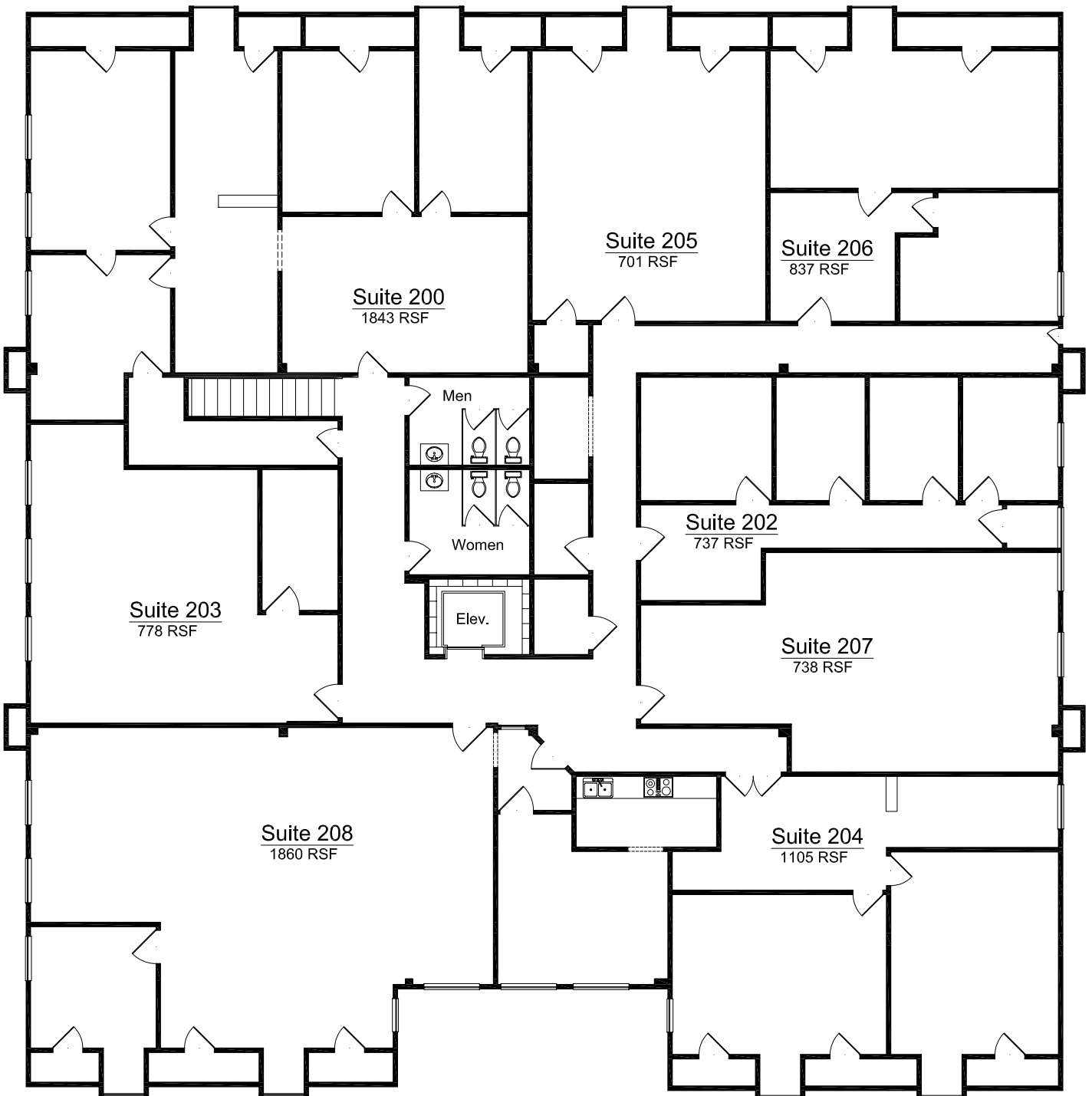
Suite 204

979 USF
1105 RSF

Park Place

2401 Pecan Street
Pflugerville, TX

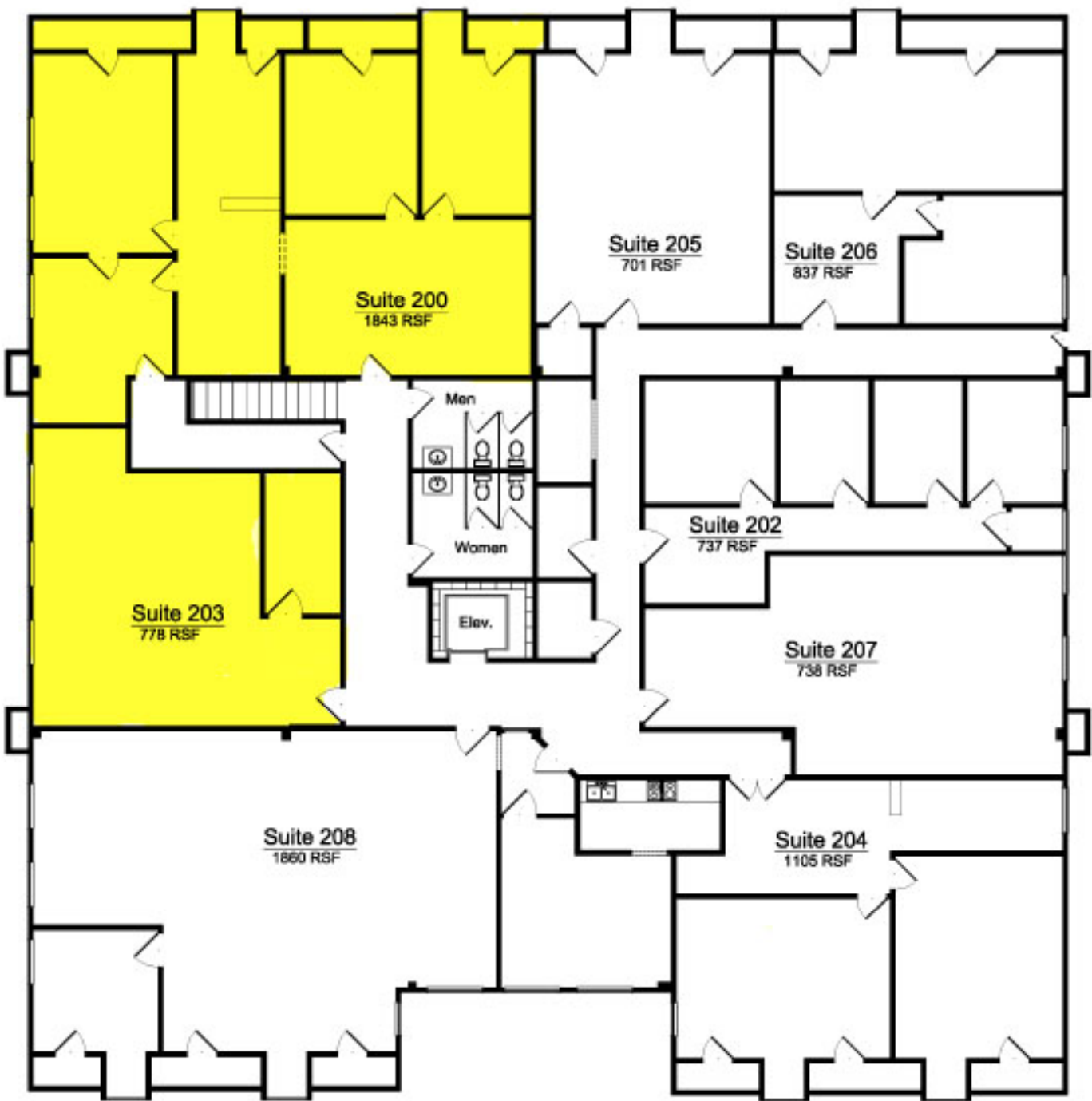
Note: dimensions and details are approximates only



Floor 2

Park Place

2401 Pecan Street
Pflugerville, TX



Floor 2

Park Place

2401 Pecan Street
Pflugerville, TX