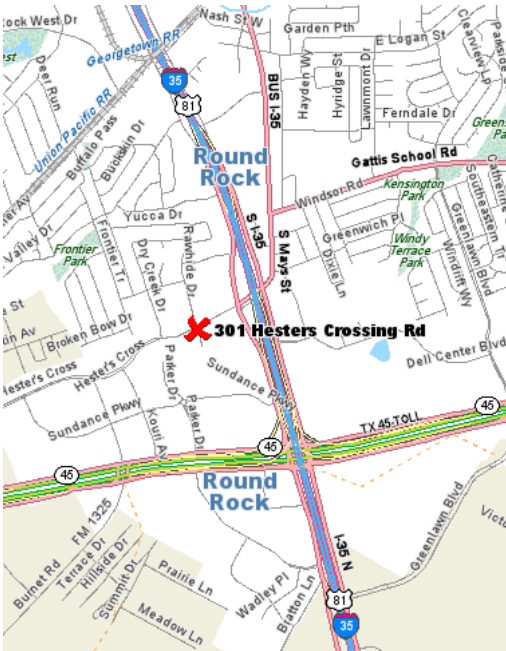


FOR LEASE



301 Hester's Crossing Round Rock | Texas | 78681

- Conveniently located 1 block west of IH-35 at Hester's Crossing and Rawhide Dr.
- Zoning: Zoned as C-1; General Commercial, according to the city of Round Rock Zoning Ordinance.
- Parking: All parking is in common for tenants, employees, and guests. There are no individual assigned parking spaces.
- Suite 202: 2,000 SF at \$2,500.00 per month.
- Suite 208: 500 SF at \$800.00 per month.
- These spaces will lease quickly!!

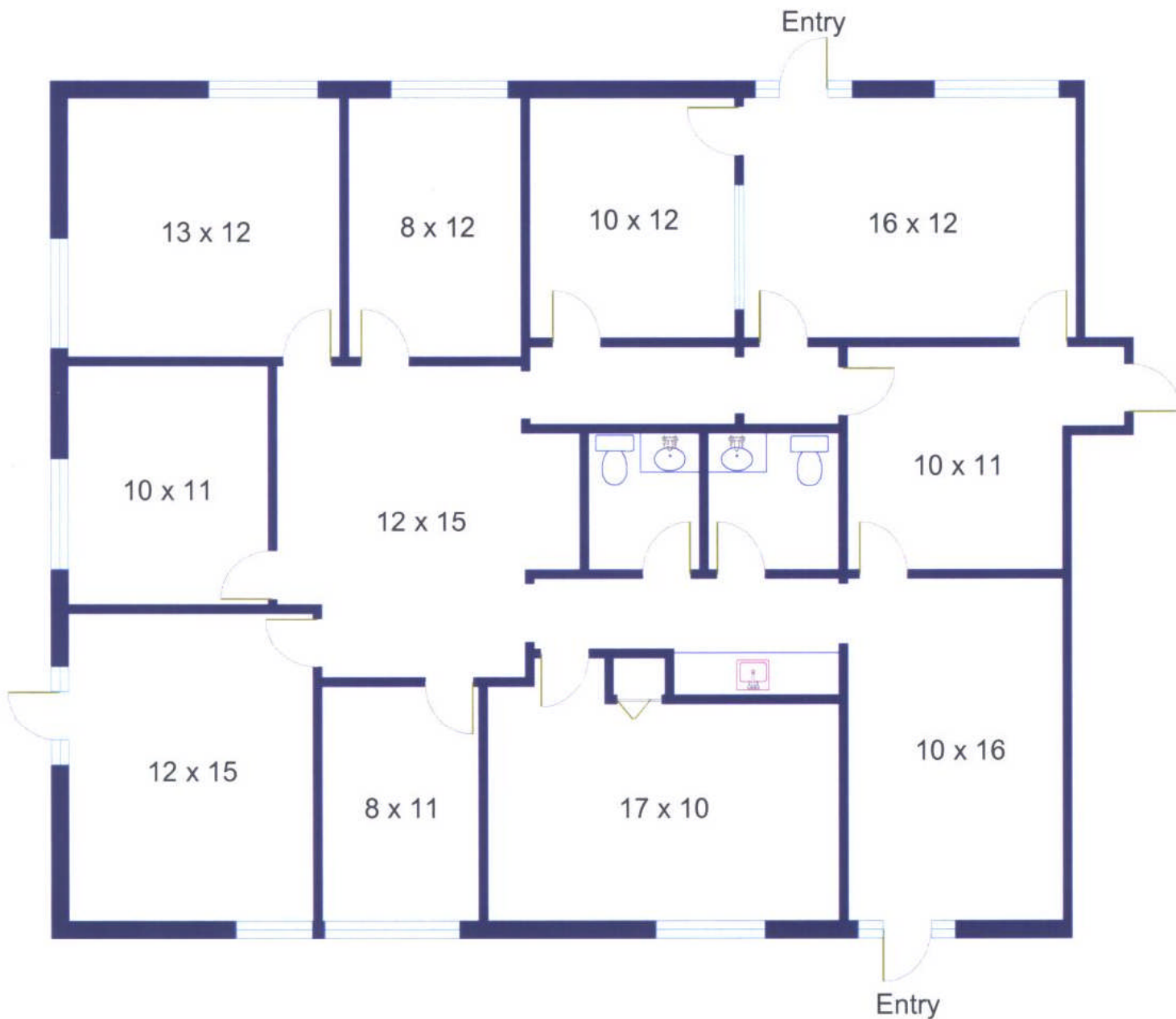
**DON
QUICK**
& associates, inc.

Contact
Brent Campbell, Realtor®
512.255.3000
Brent@donquicks.com

1000 N. IH-35, Suite A | Round Rock | TX | 78681
Phone 512.255.3000 **www.DonQuick.com**

The material contained in this memorandum is based in part upon information furnished to Don Quick & Associates, Inc. by sources deemed to be reliable. The information is believed to be accurate in all material respects, but no representation or warranty, expressed or implied, as to list accuracy or completeness is made by any party. Nothing contained herein should be relied upon as a promise or representation as to the future. Recipients should conduct their own investigation and analysis of the information described herein.

301 Hesters Crossing, #202



Note: This floor plan is an artistic rendering only. All dimensions are approximate. Floor Plan Graphics makes no representation or warranty as to this rendering's accuracy and no measurements or dimensions should be relied upon without independent verification.

Floor plan created by Floor Plan Graphics, 512.454.0383, FloorPlanGraphics.com