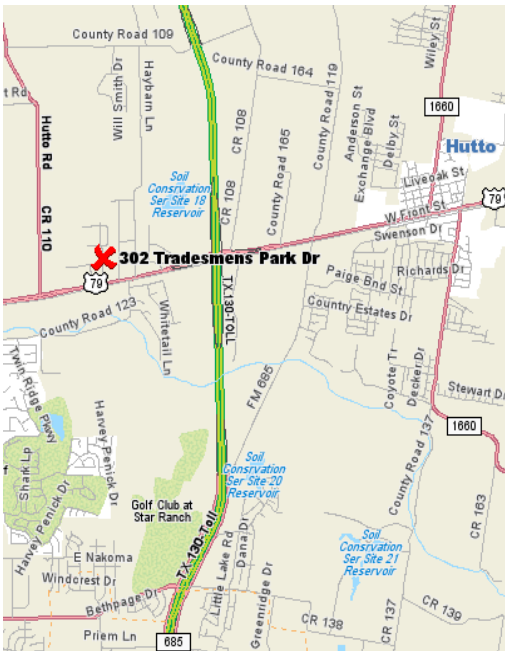


# FOR LEASE



## 302 Tradesman Park, Suite 1100 Hutto | Texas | 78634

- Located 5.5 miles East of Round Rock and 3 miles West of Hutto, just North of US HWY 79 and SH 130.
- 6,000 SF (60' x 100') in the SW corner of the building.
- 22' eaves height.
- Two 14' x 16' overhead doors.
- Steel Metal clad, 200' x 120' concrete slab.
- Zoning: Light Industrial and Commercial use.
- Utilities: TXU Electric on site, basic lighting and electric available, Jonah Special Utility District furnishes Water/Wastewater (septic system).
- Rate: \$2,400.00 per month Gross.

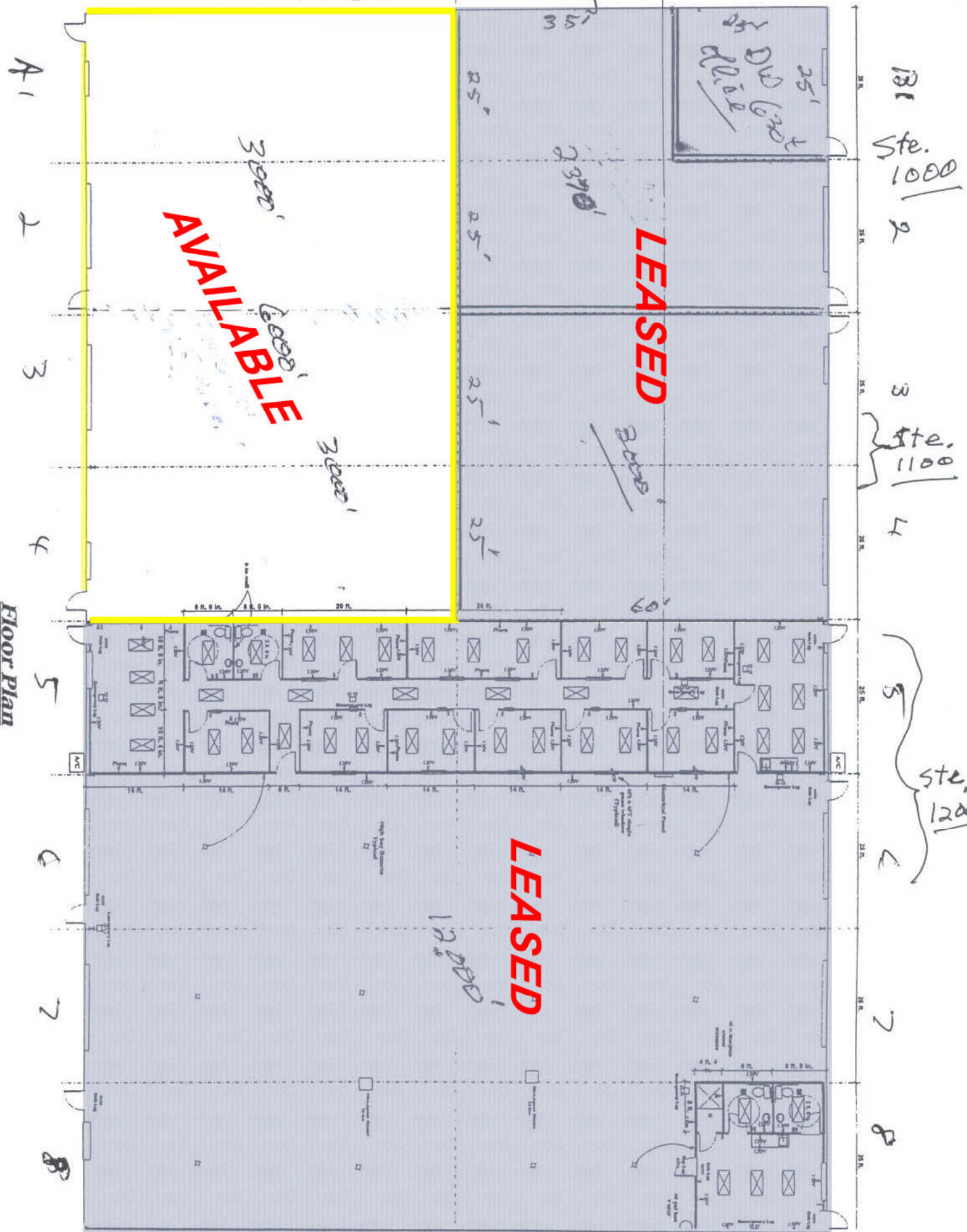
1000 N. IH-35, Suite A | Round Rock | TX | 78681  
Phone 512.255.3000 [www.DonQuick.com](http://www.DonQuick.com)

The material contained in this memorandum is based in part upon information furnished to Don Quick & Associates, Inc. by sources deemed to be reliable. The information is believed to be accurate in all material respects, but no representation or warranty, expressed or implied, as to list accuracy or completeness is made by any party. Nothing contained herein should be relied upon as a promise or representation as to the future. Recipients should conduct their own investigation and analysis of the information described herein.

**DON  
QUICK**  
& associates, inc.

Contact  
Don Quick, Realtor®  
512.255.3000  
DonQ@donquick.com

"Attached Drawing"



Floor Plan  
Scale: 1/8" = 1'-0"